

HOTT WIRE

HOTT

April 2020

Issue 10

This issue is in remembrance of TRAVIS ROWE (April 11 1965 - January 21 2020) HOTT extends our heartfelt condolences to his family and friends. May he live on in our memories. RIP Travis

In This Issue:

- Logo Update
- Message from Alan
- COVID-19
- Waste Guidelines
- Tenant Insurance
- Heaters Collection
- Word Search



HOTT



HOTT

Introducing our new logo! We hope you love it as much as we do.

ATTENTION!

HOTT will not be holding weekly office hours until further notice due to COVID-19. We will post notices for dates to submit rent and/or documents in the office and will be practising strict social distancing protocols.

CONTACT US

Phone Number: (416) 369-0366

Email: info@hott.ca

Web page: www.hott.ca

Facebook: HOTT Houses Opening Today Toronto

Twitter & Instagram: @hotthousing

Charitable Number: 128027703RR0001



DEAR RESIDENTS,

THINKING OF YOU ALL DURING THESE UNCERTAIN TIMES IN OUR WORLD.

WISHING YOU ALL PATIENCE, UNITY & PEACE DURING WHAT MAY FEEL LIKE CHAOS.

YOU'RE IN GOOD HANDS AT HOTT!

YOUR FRIEND,
ALAN CRIBBLE

Many of you may remember Alan, a long time former employee here at HOTT. He mailed us this card and it was addressed to you, our residents. We wanted to share it with you!



At HOTT, your safety is our top priority. We are doing our best to make sure that all of our properties maintain high standards of cleanliness in response to COVID-19. Please help us keep surfaces clean, take extra precautions and take care. - *your HOTT team*

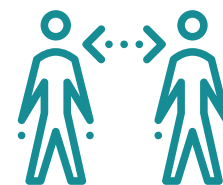
Our team has been working closely with other members of our local community in an effort to support our residents any way we can. Here are some photos of staff delivering food boxes that we received from Building Roots Toronto and HOTT volunteers. Making connections will help get us through this!



We ask that you please contact staff if you are struggling due to COVID-19. Our team is here to help if you need support during this difficult time. Please reach out.



Stay home.
We can all
do our part.



Keep your
distance. It
may save
lives.

Wash your
hands. It
makes a
difference.



One of our staff members putting their sewing skills to good use! These reuseable and washable masks are great for keeping our staff and residents safe. We are grateful to have such a skilled and dedicated team.

RESIDENTS OF JARVIS AND MARIGOLD:
Unfortunately, we will be postponing the opening of the rooftop gardens in response to COVID-19. This closure will be until further notice as we will keep up to date with the City guidelines for community gardening. We apologize and will inform you of any changes as they come. Thank you.

Help us out by putting waste in its place! We appreciate you helping us reduce waste in all of our HOTT properties.



Please use the diagram below to remember which items go into the green bin, the waste bin, and the recycling bin



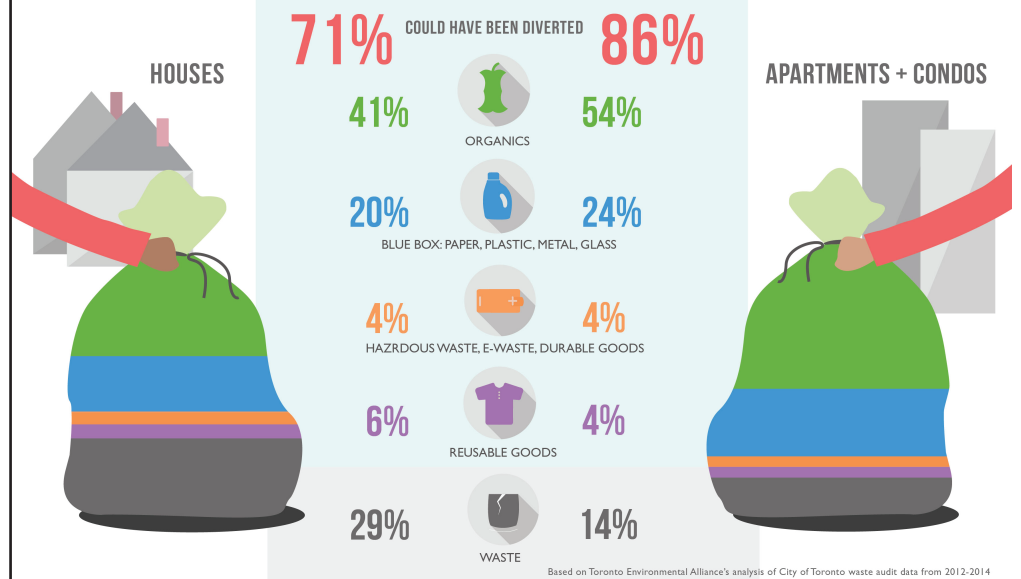
Get the new
Towaste App

TORONTO



Download the TOwaste App for quick answers to your questions!

Most of what's in your garbage bag **DOESN'T BELONG THERE**



what goes in the **GREEN BIN**



YES

NO



what goes in the **LANDFILL**



YES

NO



what goes in the **RECYCLING**



YES

NO



Protect yourself with the HSC Tenant Insurance Program

*Low-cost insurance that covers your personal property,
living expenses, and the cost of claims against you
in the event of a disaster. Starting at less than \$16 a month.*



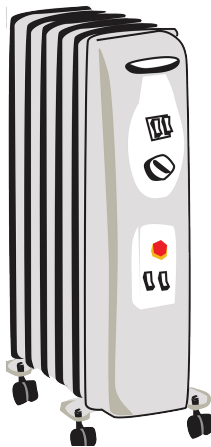
Apply for HSC Tenant Insurance Program today by visiting <http://tenant.hscorp.ca> or by calling a licensed insurance broker from Marsh's Private Client Services at 1 866 940 5111

Ontario Works clients & recipients of Ontario Disability Support Program benefits may have the costs of this insurance covered as an allowable expense under their shelter allowance.

ATTENTION!

We will now be collecting all space heaters that have been lent out over this winter season.

If you have any space heaters please notify staff to return during office hours or staff will be contacting you. Thanks!



Check out
thewordsearch.com
for more puzzles!

ANSWER KEY



POSITIVITY WORD SEARCH

S	A	T	S	H	A	R	I	N	G	I	H	C	I
R	C	C	R	E	S	P	O	N	S	I	B	L	E
C	T	E	E	E	D	I	R	P	S	R	T	O	E
L	P	P	B	A	B	T	I	B	I	I	E	C	E
E	O	S	T	T	A	R	O	V	S	T	F	H	C
A	S	E	Y	E	E	E	A	V	R	F	F	O	C
N	I	R	E	T	Y	R	U	V	F	P	O	N	O
L	T	I	N	R	I	T	A	P	E	L	R	E	U
I	I	N	G	A	A	R	E	E	F	R	T	S	R
N	V	O	R	I	T	U	G	F	S	I	Y	T	A
E	E	P	L	S	G	U	S	E	A	L	A	L	G
S	N	Y	C	P	E	R	R	U	T	S	U	Y	E
S	S	N	E	E	I	S	N	E	A	N	U	I	I
N	O	I	G	I	L	E	R	P	A	A	I	N	I

BRAVERY	INTEGRITY	SHARING	HONESTLY	PRIDE
RESPECT	COURAGE	CLEANLINESS	SAFETY	RELIGION
EFFORT	POSITIVE	NATURE	RESPONSIBLE	